

# Gebrauchs- und Montageanleitung

DE Bedienungsanleitung

GB Instructions Booklet

FR Mode d'emploi

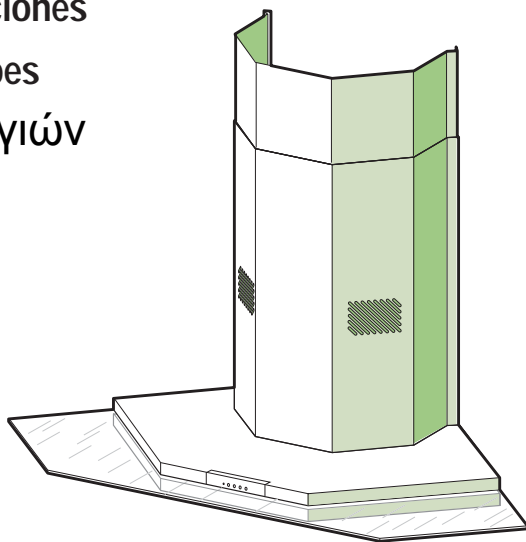
IT Libretto Istruzioni

NL Gebruiksaanwijzing

ES Manual de instrucciones

PT Manual de instruções

GR Εγχειρίδιο οδηγιών



## ***EKD 10650.0E-84***

**Küppersbusch**

ALLERFEINSTE KÜCHENTECHNIK

Dear Customer,

If you follow the recommendations contained in this Instruction Manual, your appliance will give you constant high performance and will remain efficient for many years to come.

## CONTENTS

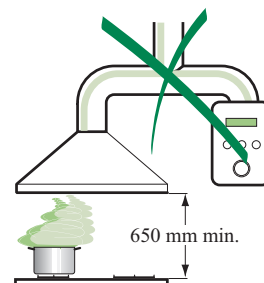
---

RECOMMENDATIONS AND SUGGESTIONS	15
CHARACTERISTICS	16
INSTALLATION	18
USE	21
MAINTENANCE	22

## RECOMMENDATIONS AND SUGGESTIONS

## INSTALLATION

- 
- Mod.**  
2300 W/40 A 50 Hz
- TOT.** 1800 W
- 14 140 V**
- 1700 270**
- CE** **RoHS** **WEEE**
- 40000**



**USE**

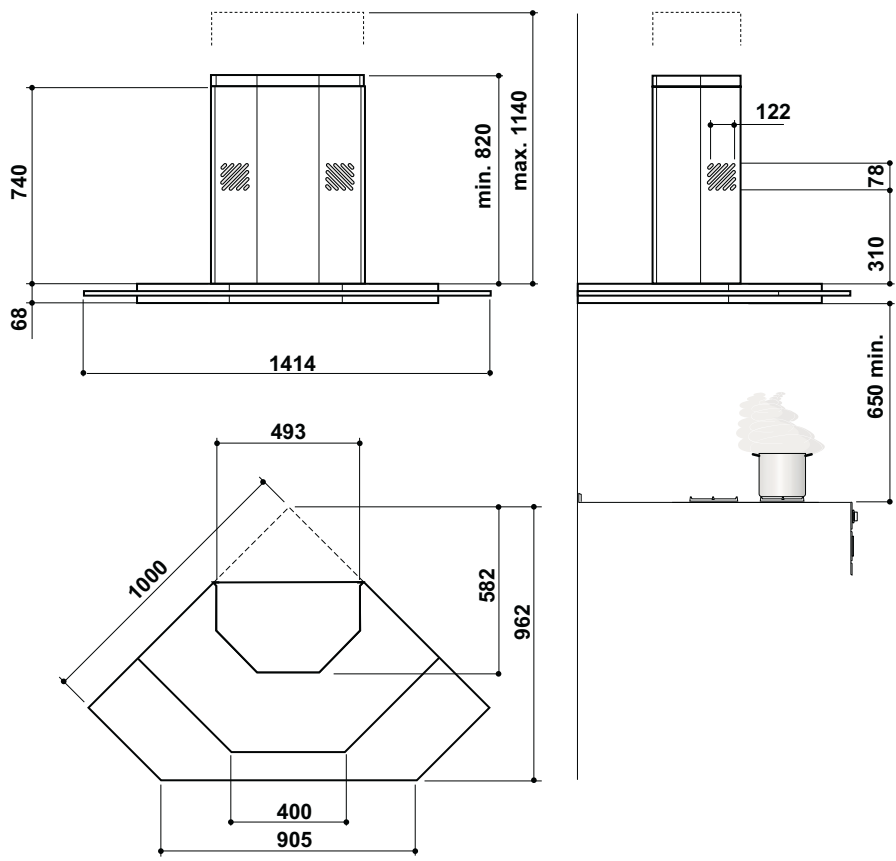
- 

## MAINTENANCE

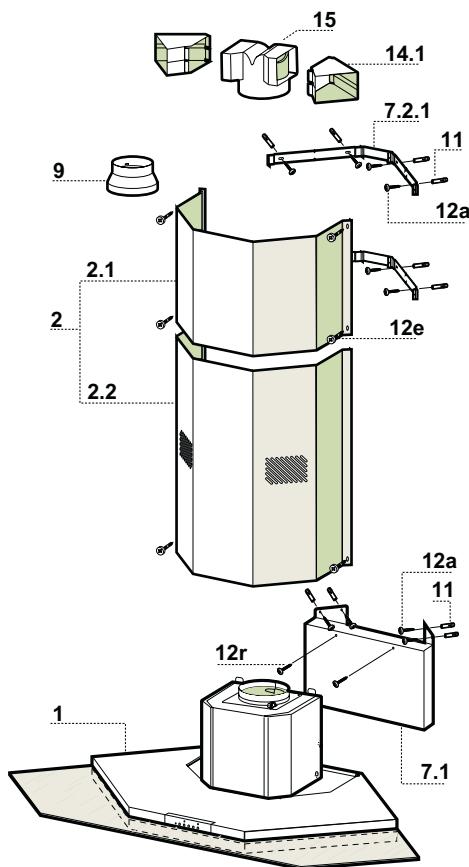
- Switch off or unplug the appliance from the mains supply before carrying out any maintenance work.
- Clean and/or replace the Filters after the specified time period.
- Clean the hood using a damp cloth and a neutral liquid detergent.

# CHARACTERISTICS

## Dimensions



## Components

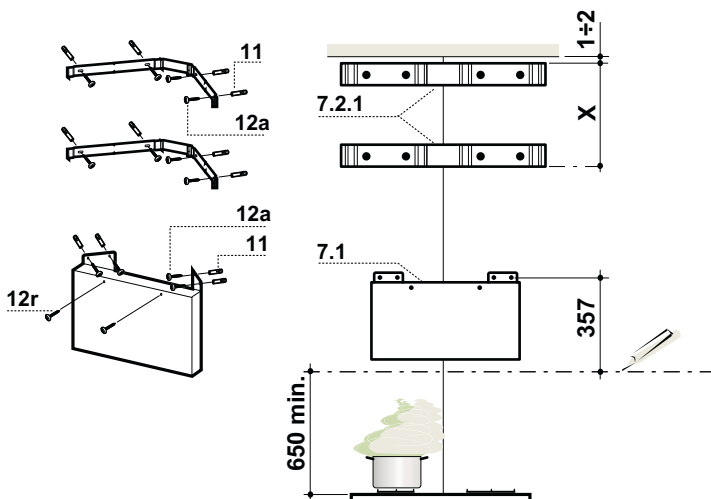


Ref.	Q.ty	Product Components
1	1	Hood Body, complete with: Controls, Light, Blower, Filters
2	1	Telescopic Chimney comprising:
2.1	1	Upper Section
2.2	1	Lower Section
9	1	Reducer Flange $\varnothing$ 150-120 mm
14.1	2	Air Outlet Connection Extension
15	1	Air Outlet Connection

Ref.	Q.ty	Installation Components
7.1	1	Hood Connector Support
7.2.1	2	Upper Chimney Section Fixing Brackets
11	12	Wall Plugs
12a	12	Screws 4,2 x 44,4
12e	6	Screws 2,9 x 9,5
12r	2	Screws 4,2 x 12,7

Q.ty	Documentation
1	Instruction Manual

## Wall drilling and bracket fixing

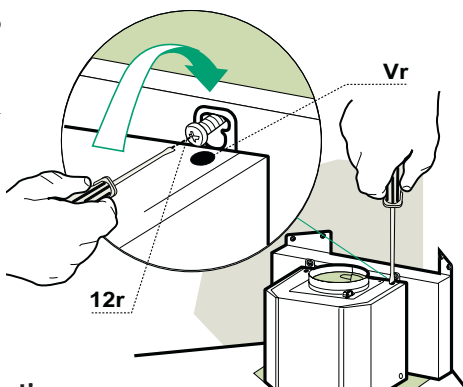


### Wall marking:

- Draw a horizontal line at 650 mm above the hob.
- Place bracket **7.2.1** on the wall as shown about 1-2 mm from the ceiling or upper limit.
- Mark the wall at the centres of the holes in the bracket.
- Place bracket **7.2.1** on the wall as shown at X mm below the first bracket (X = height of the upper chimney section supplied).
- Mark the wall at the centres of the holes in the bracket.
- Place the Hood Connector Support **7.1** on the wall as shown at 357 mm above the horizontal reference line, making sure that the holes used to fix the corner to the wall are equidistant.
- Mark the wall at the centres of the holes in the Support.
- Drill  $\varnothing$  8 mm holes at all the centre points marked.
- Insert the wall plugs **11** in the holes.
- Fix the brackets and the Support using the **12a** (4,2 x 44,4) screws supplied.
- Insert the two screws **12r** (4,2 x 12,7) supplied in the hood body fixing holes, located on the front plate of the Hood Connector Support, leaving a gap of 5-6 mm between the Support and the head of the screw.

## Mounting the hood body

- Before attaching the hood body, tighten the two screws **Vr** located on the hood body mounting points.
- Hook the hood body onto the screws **12r** (4,2 x 12,7).
- Fully tighten support screws **12r** (4,2 x 12,7).
- Adjust screws **Vr** to level the hood body

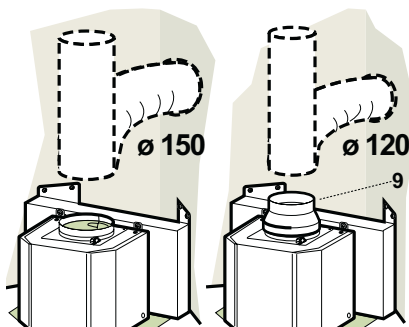


## Connections

### DUCTED VERSION AIR EXHAUST SYSTEM

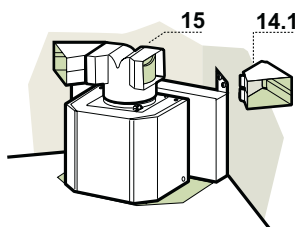
When installing the ducted version, connect the hood to the chimney using either a flexible or rigid pipe  $\varnothing$  150 or 120 mm, the choice of which is left to the installer.

- To install a  $\varnothing$  120 mm air exhaust connection, insert the reducer flange **9** on the hood body outlet.
- Fix the pipe in position using sufficient pipe clamps (not supplied).
- Remove any activated charcoal filters.



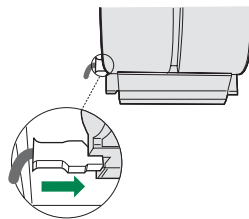
### RECIRCULATION VERSION AIR OUTLET

- Push fit connection **15** onto the air outlet.
- Insert the connection extension pieces laterally **14.1** in connection **15**.
- Make sure that the outlet of the extension pieces **14.1** is horizontally and vertically aligned with the chimney outlets. If this is not the case, adjust the position by either reversing the connection extension pieces **14.1** or by pushing connector **15** all the way in.
- Ensure that the activated charcoal filters have been inserted.



## ELECTRICAL CONNECTION

- Connect the hood to the mains through a two-pole switch having a contact gap of at least 3 mm.
- Remove the grease filters (see paragraph Maintenance) being sure that the connector of the feeding cable is correctly inserted in the socket placed on the side of the fan.



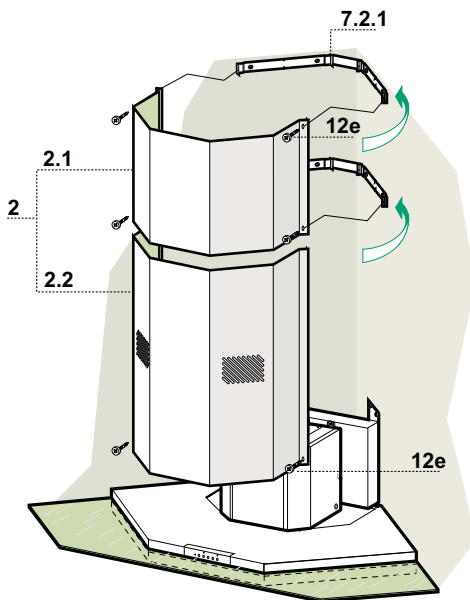
## Flue assembly

### Upper exhaust flue

- Slightly widen the two sides of the upper flue and hook them behind the brackets **7.2.1**, making sure that they are well seated.
- Secure the sides to the brackets using the 4 screws **12e** (2,9 x 9,5) supplied.

### Lower exhaust flue

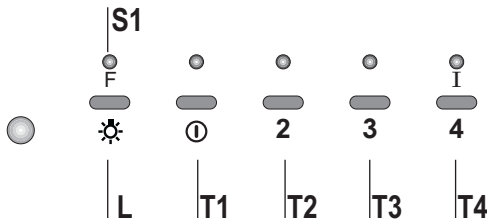
- Slightly widen the two sides of the flue and hook them between the upper flue and the wall, making sure that they are well seated.
- Fix the lower part laterally to the hood body using the 2 screws **12e** (2,9 x 9,5) supplied.





Control Panel

The hood can be switched on pushing directly onto the requested speed without firstly having to select 0/1 button.



KEY	LED		FUNCTIONS
<b>L</b>	0/1 Light		Turns lighting on and off.
<b>T1</b>	0/1 Motor	on	First speed. When pressed for about 2 seconds the motor is switched off.
<b>T2</b>	Speed	on	Second speed.
<b>T3</b>	Speed	on	Third speed.
<b>T4</b>	Speed	Fixed	Max. speed
		Flashing	Intensive speed. Suitable for the strongest cooking vapours and odours. The function becomes active when the button is pushed for about 2 seconds. After 10 minutes of functioning it turns off automatically. This function can be interrupted by means of pressing any of the buttons.
<b>S1</b>	Led	Fixed	Indicates that the Metal grease filters saturation alarm has been triggered, and the filters need to be washed. The alarm is triggered after 100 working hours. ( <i>Reset; check the Maintenance-paragraph</i> )
		Flashing	indicates that the activated charcoal odour filter saturation alarm has been triggered, and the filter has to be replaced; the metal grease filters must also be washed. The activated charcoal odour filter is triggered after 200 working hours. ( <i>Activation and Reset; check the Maintenance-paragraph</i> )

## Grease filters

---

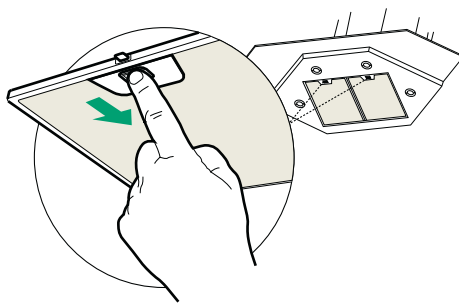
### CLEANING METAL GREASE FILTERS

#### Alarm signal reset

- Switch of the lights and extractor motor.
- Press button **T3** for at least 3 seconds, until the leds start to flash.

#### Cleaning the filters

- The filters are washable and must be cleaned when led **S1** flashes or at least every 2 months of operation, or more frequently for particularly heavy usage.
- Remove the filters one at a time by releasing the fixing hooks.
- Wash the filters, taking care not to bend them. Allow them to dry before refitting.
- When refitting the filters, make sure that the handle is visible on the outside.



## Activated charcoal filter (Recirculation version)

### REPLACING THE ACTIVATED CHARCOAL FILTER

- The filter is not washable and cannot be regenerated. It must be replaced when led **S1** flashes or at least every 4 months. The alarm signal will only light up when the extractor motor is switched on.

#### Alarm signal reset

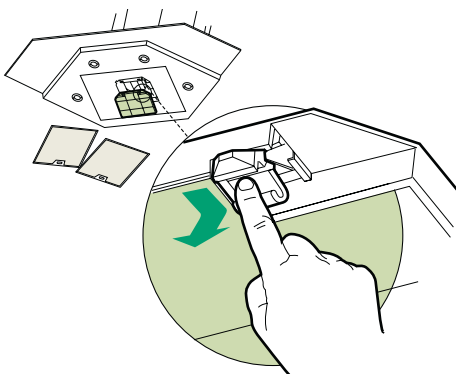
- Switch off the lights and extractor motor.
- Press button **T3** for at least 3 seconds, until the leds start to flash.

#### Replacing the Filter

- Remove the metal grease filters
- Remove the saturated activated carbon filter by releasing the fixing hooks
- Fit the new filter by hooking it into its seating
- Replace the metal grease filters.

#### Alarm signal activation

- In Recirculation version Hoods, the Filter saturation alarm can be enabled on installation or at a later date. Turn the Lights and the suction Motor off.
- Disconnect the Hood using the Main switch or the double-pole switch on the mains power supply.
- Restore the connection by pressing and holding **T1**.
- Release the button. All five LEDs are turned on
- Within 3 seconds press **T1** until LEDs **T1** and **T4** flash in confirmation:  
LED flashes twice - Activated charcoal filter saturation alarm **ENABLED**  
LED flashes once - Activated charcoal filter saturation alarm **DISABLED**

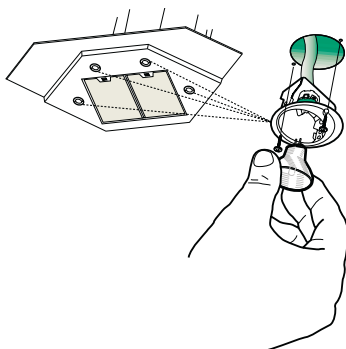


## Lighting

### LIGHT REPLACEMENT

#### 20 W halogen light.

- Remove the 2 screws fixing the Lighting support, and pull it out of from the Hood.
- Extract the lamp from the Support.
- Replace with another of the same type, making sure that the two pins are properly inserted in the lamp holder socket holes.
- Replace the Support, fixing it in place with the two screws removed as above.





KÜPPERSBUSCH Hausgeräte AG  
Küppersbuschstraße, 16  
D - 45883 Gelsenkirchen

Hausanschritt:  
Küppersbuschstr. 16  
45883 Gelsenkirchen  
Telefon: (02 09) 4 01-0  
Telefax: 20 931 810  
Telefax: (02 09) 4 01-3 03